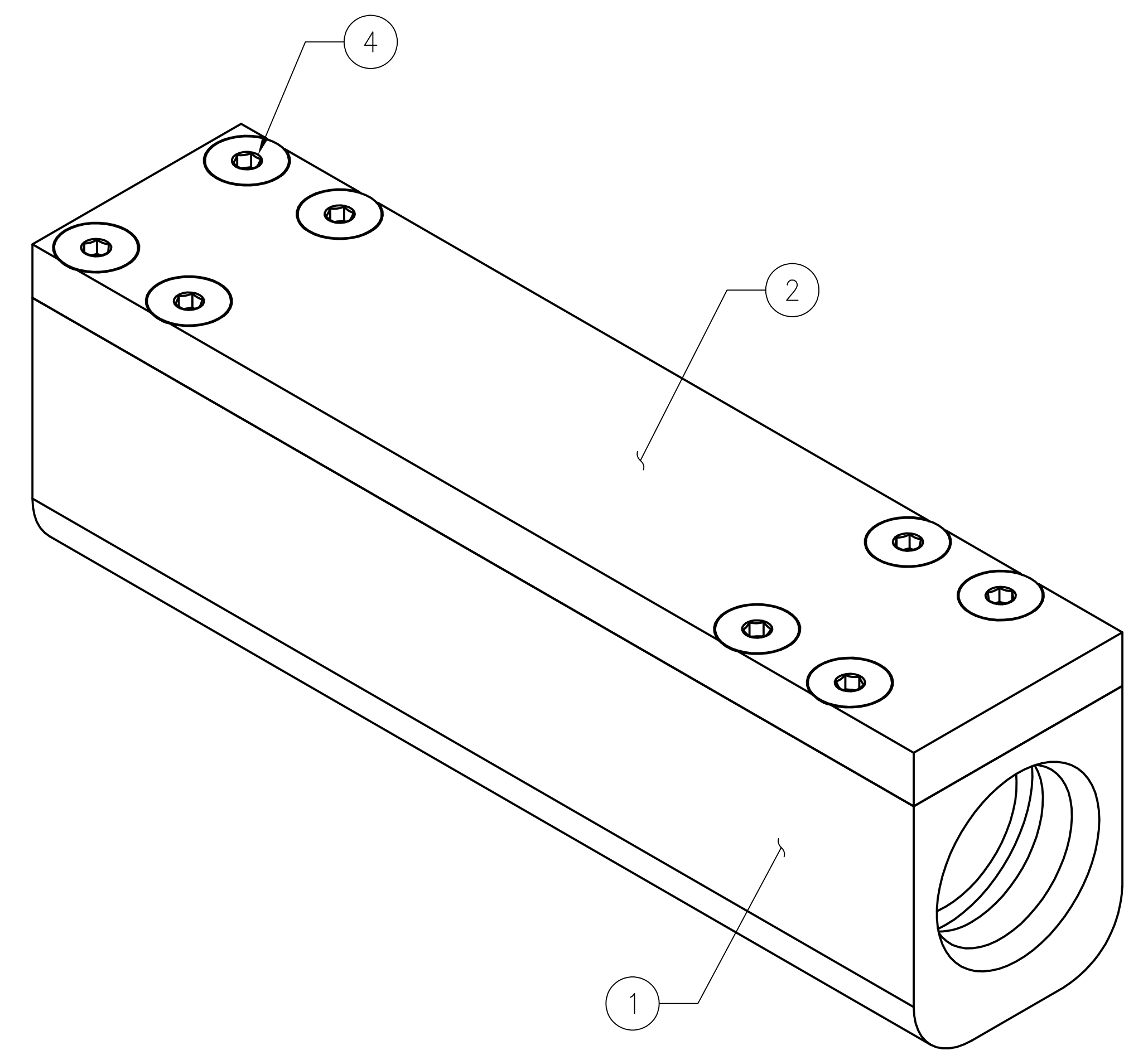
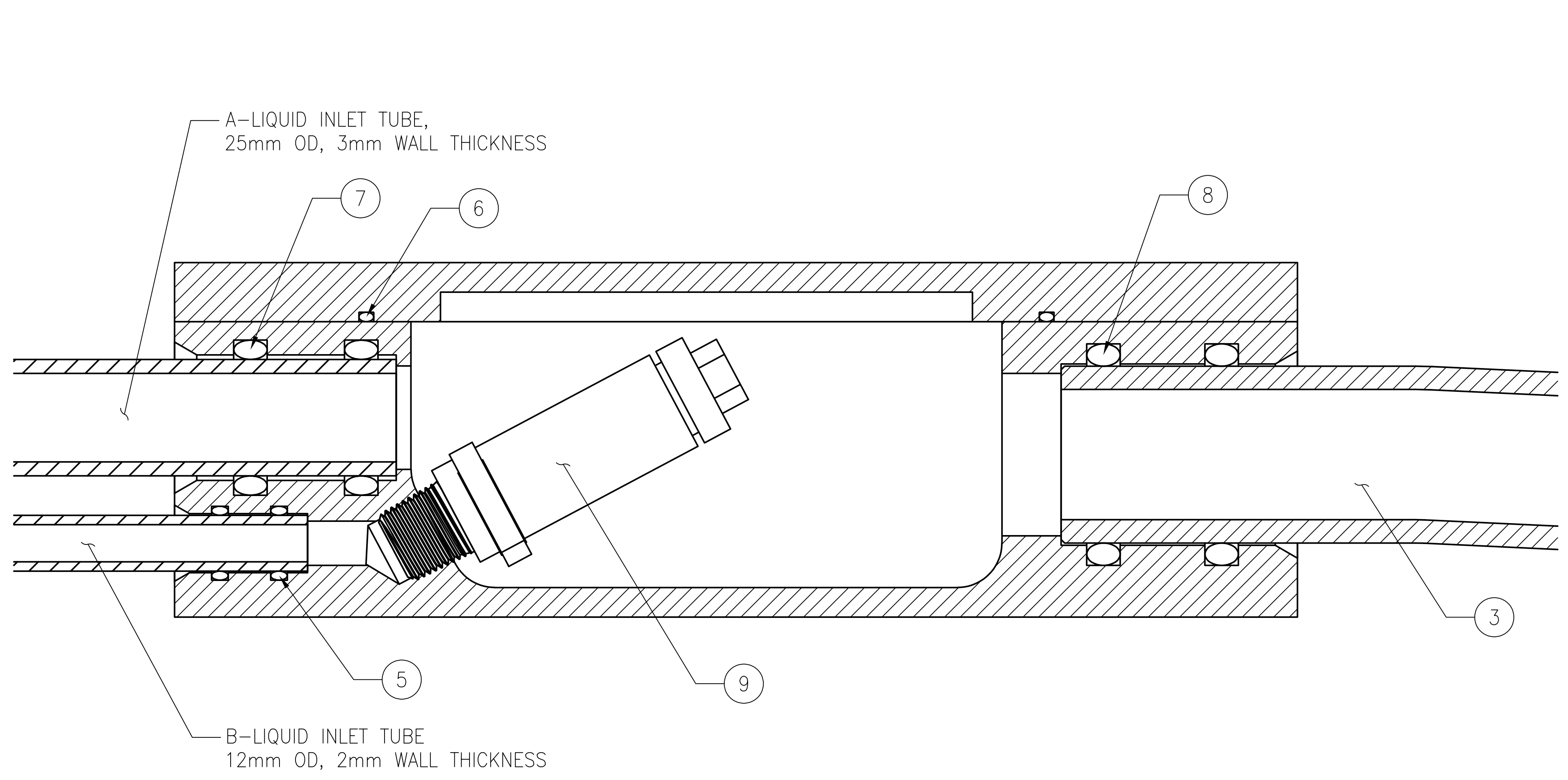


FILE NAME: 2025-1511-00 TBM GROUT SYSTEM MIXING BOX.DWG; PRINT DATE: 11/19/2025

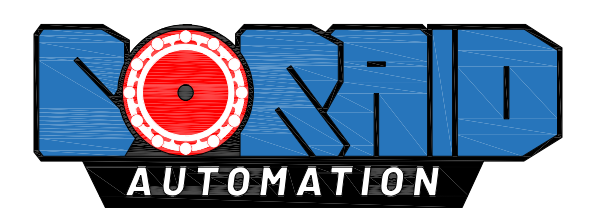


POS	QTY	SUPPLIER	PART NUMBER	DESCRIPTION	MATERIAL
1	1	BORAID AUTOMATION	2025-1511-MK01-00	TBM GROUT SYSTEM MIXING CHAMBER	316 STAINLESS
2	1	BORAID AUTOMATION	2025-1511-MK02-00	TBM GROUT SYSTEM MIXING CHAMBER LID	ASTM A-514
3	1	BORAID AUTOMATION	2025-1511-MK03-00	OFFSET PIPE FOR TBM GROUT MIXING BOX	304 STAINLESS
4	8	McMASTER CARR	92210A583	5/16"-18 x 1" LONG FLAT HEAD SCREW	18-8 STAINLESS
5	2	McMASTER CARR	9452K23	O-RING, SIZE SAE AS568-111, DUROMETER 70	BUNA-N
6	2	McMASTER CARR	9452K319	O-RING, SIZE SAE AS568-156, DUROMETER 70	BUNA-N
7	2	McMASTER CARR	9452K4	O-RING, SIZE SAE AS568-317, DUROMETER 70	BUNA-N
8	2	McMASTER	9452K44	O-RING, SIZE SAE AS568-325, DUROMETER 70	BUNA-N
9	1	BORAID AUTOMATION	2024-1500-MK01-01	MIXING NOZZLE ASSEMBLY FOR MIXING BOX	416 STAINLESS

NOTES: 1. O-RINGS MAY BE SUBSTITUTED FOR ANY O-RING OF THE SAME DASH NUMBER WITH DUROMETER 70.

REV	DATE	BY	APP	DESCRIPTION

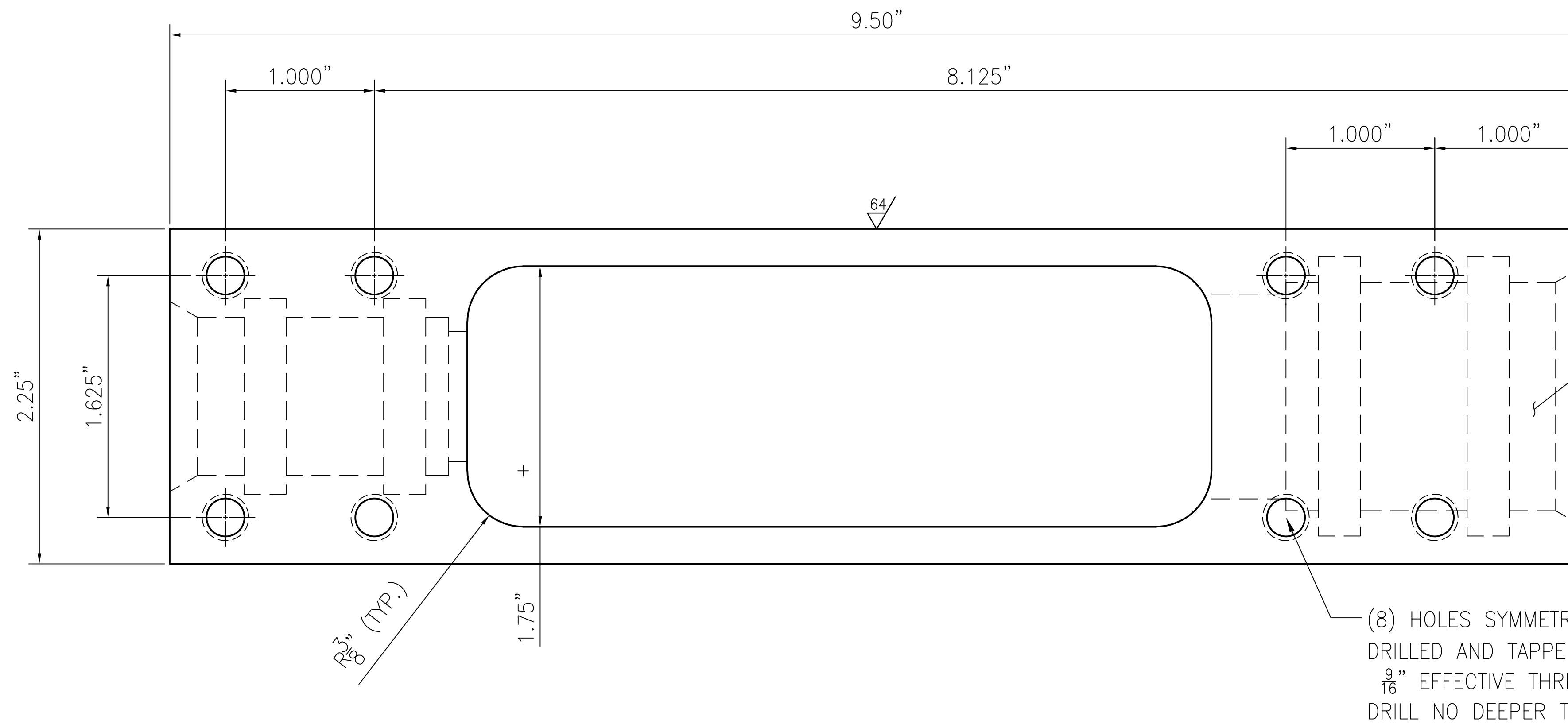
DESIGNED BY	R.McLANE
DRAWN BY	J.JONASEN
CHECKED BY	-
IN CHARGE	-
DATE	11.18.2025



BORAID AUTOMATION  
3050 E. AIRPORT WAY  
LONG BEACH, CA 90806  
562.264.2500

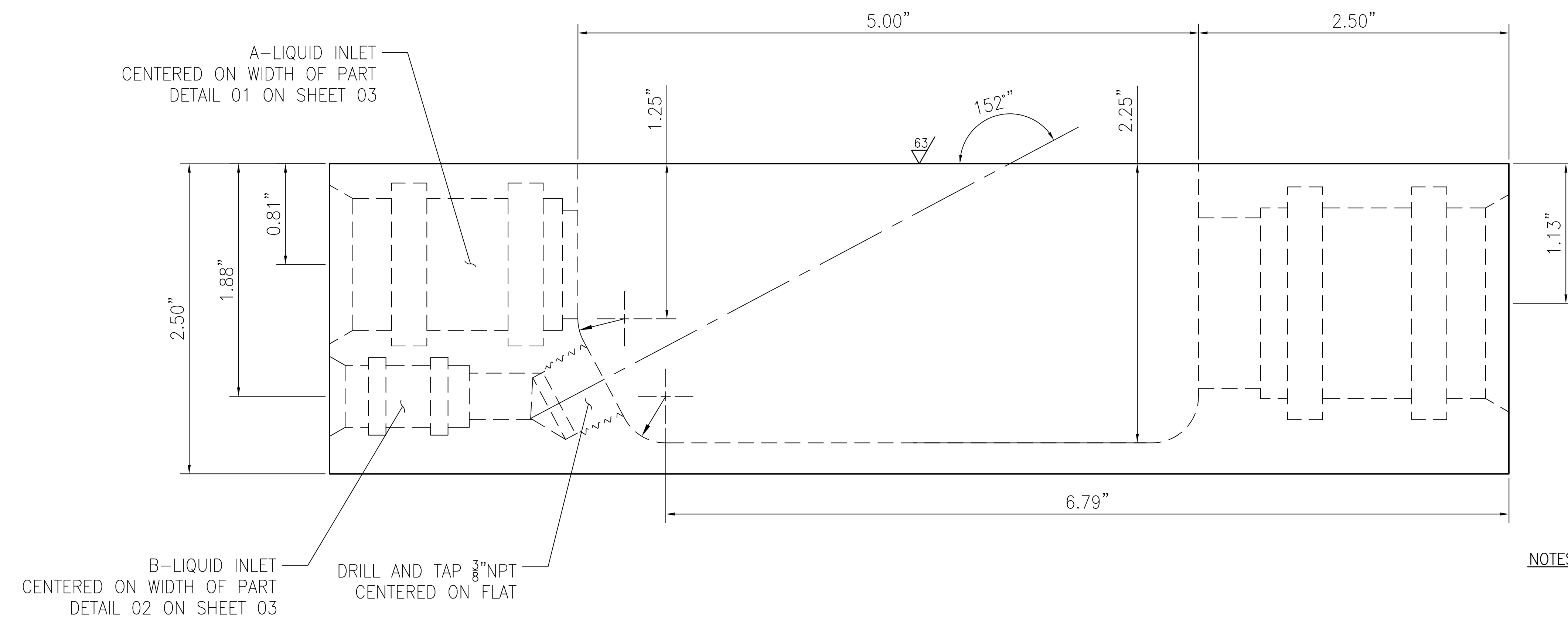
TBM GROUT SYSTEM MIXING BOX ASSEMBLY	

CATALOG NO	2025-1511-00
DRAWING NO	2025-1511
SCALE	-
SHEET NO	01



OUTLET  
CENTERED ON WIDTH OF PART  
DETAIL 03 ON SHEET 03

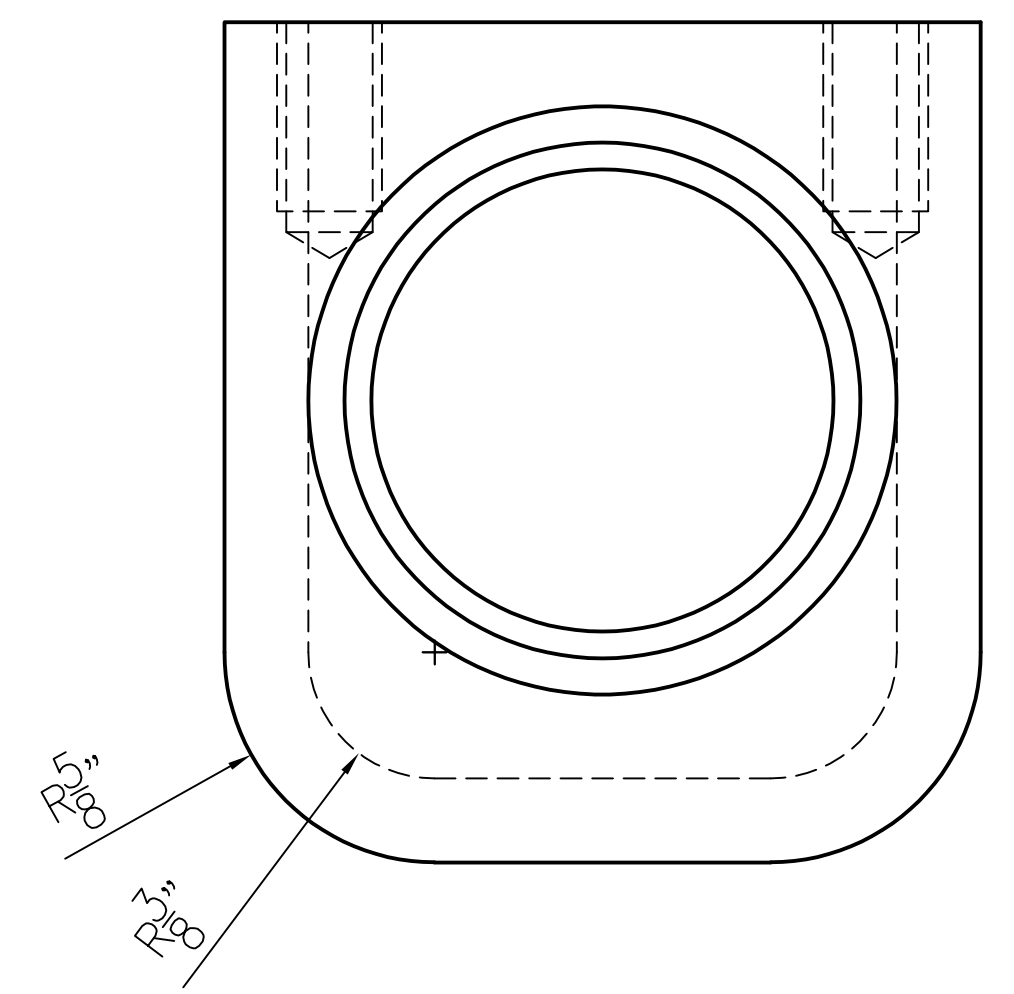
(8) HOLES SYMMETRIC ABOUT WIDTH OF PART  
DRILLED AND TAPPED  $\frac{5}{16}$ "-18  
 $\frac{9}{16}$ " EFFECTIVE THREAD LENGTH  
DRILL NO DEEPER THAN  $\frac{5}{8}$ "



A-LIQUID INLET  
CENTERED ON WIDTH OF PART  
DETAIL 01 ON SHEET 03

B-LIQUID INLET  
CENTERED ON WIDTH OF PART  
DETAIL 02 ON SHEET 03

DRILL AND TAP  $\frac{3}{8}$ "NPT  
CENTERED ON FLAT

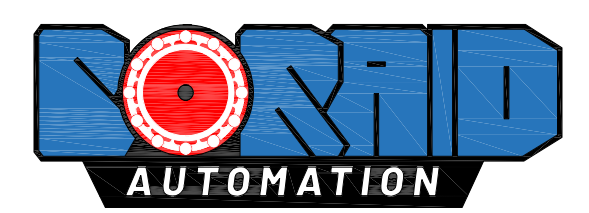


NOTES:  
1. MATERIAL IS 316 STAINLESS STEEL  
2. TOLERANCES:  
2.1. X.XX +/- 0.030"  
2.2. X.XXX +/- 0.005"

FILE NAME: 2025-1511-00 TBM GROUT SYSTEM MIXING BOX.DWG; PRINT DATE: 11/19/2025

REV	DATE	BY	APP	DESCRIPTION

DESIGNED BY	R.McLANE
DRAWN BY	J.JONASEN
CHECKED BY	-
IN CHARGE	-
DATE	11.18.2025

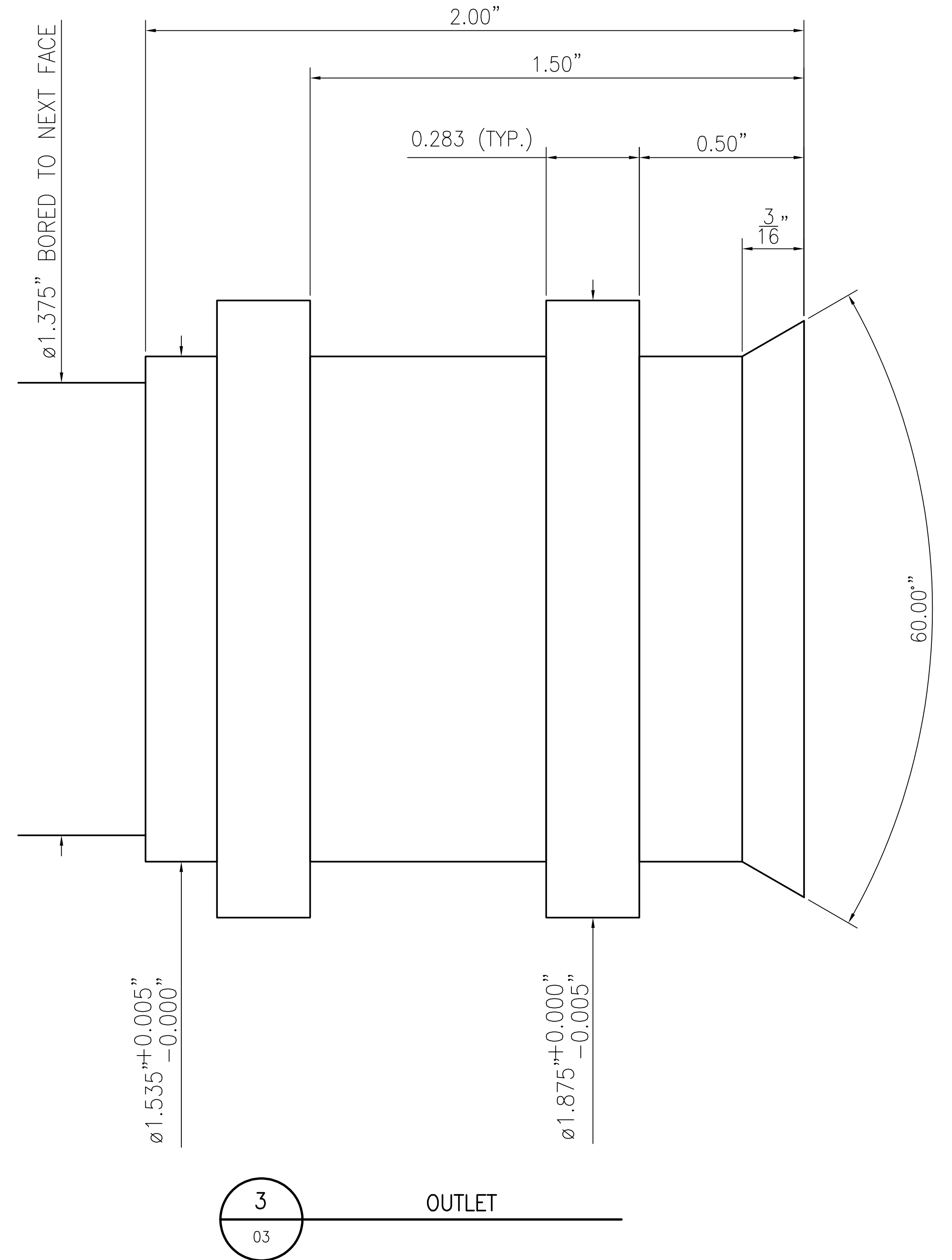
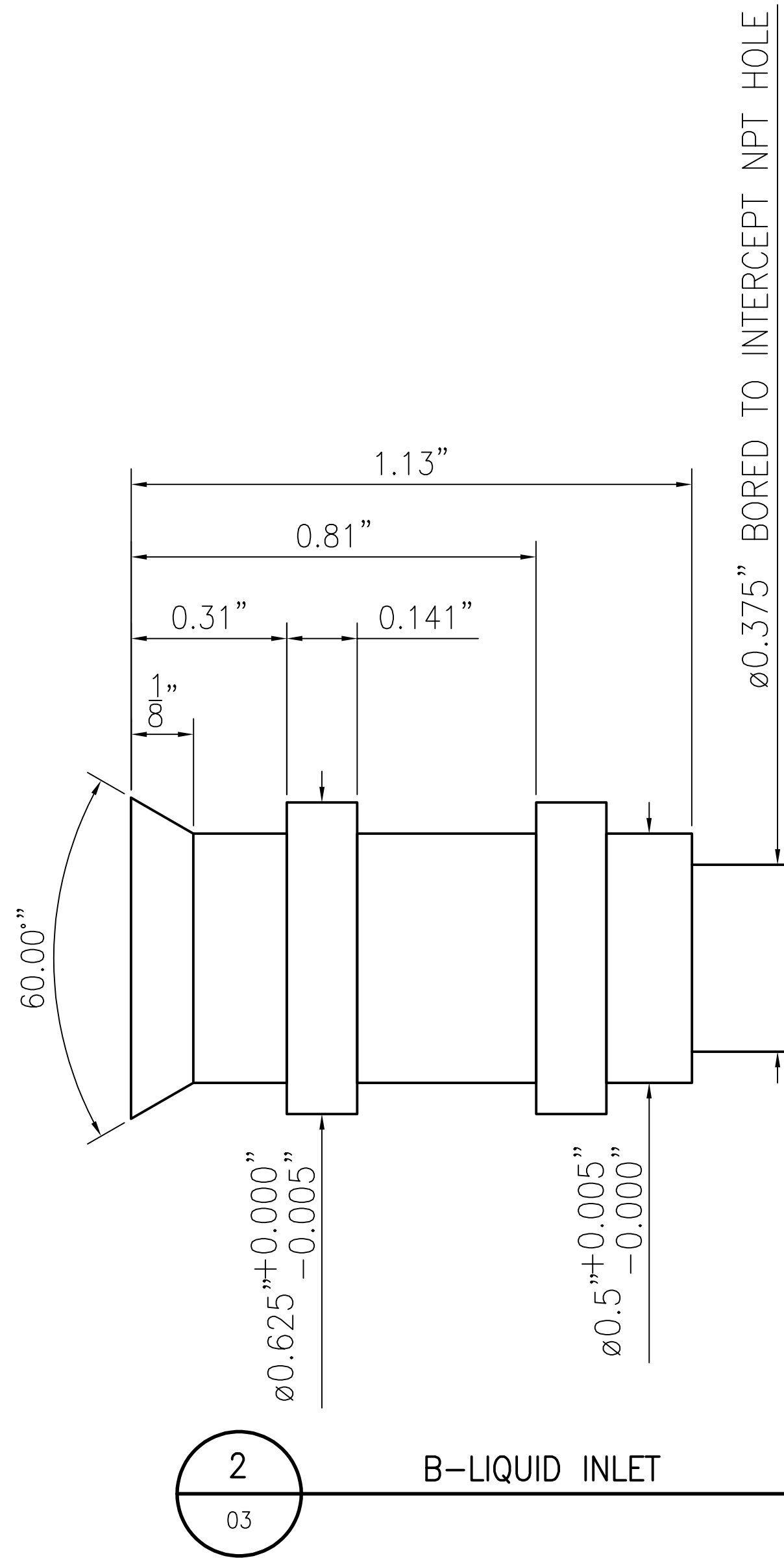
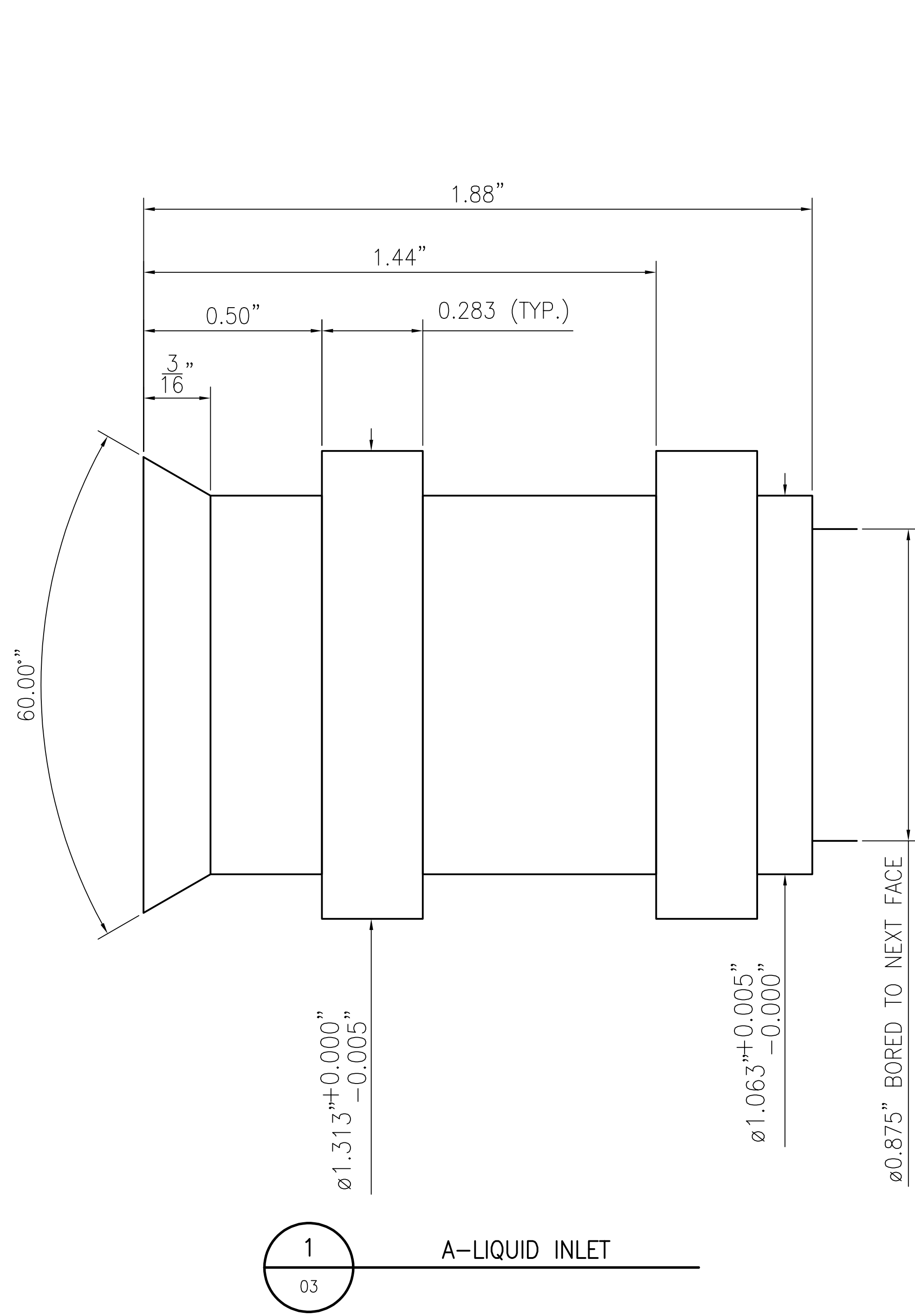


BOROID AUTOMATION  
3050 E. AIRPORT WAY  
LONG BEACH, CA 90806  
562.264.2500

TBM GROUT SYSTEM MIXING BOX MIXING CHAMBER	
-	
MAIN BODY DETAILS	
-	
-	

CATALOG NO	2025-1511-MK01-00
DRAWING NO	2025-1511
SCALE	-
SHEET NO	02

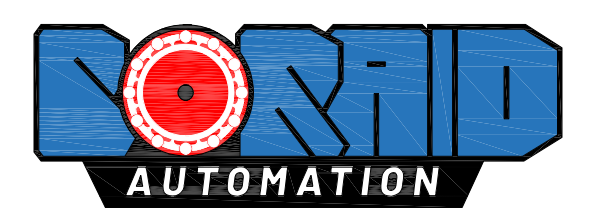
FILE NAME: 2025-1511-00 TBM GROUT SYSTEM MIXING BOX.DWG; PRINT DATE: 11/19/2025



NOTES: 1. TOLERANCES:  
 1.1. X.XX +/- 0.030"  
 1.2. X.XXX +/- 0.005"  
 2. O-RING GROOVE SURFACE FINISH 63μINCH

REV	DATE	BY	APP	DESCRIPTION

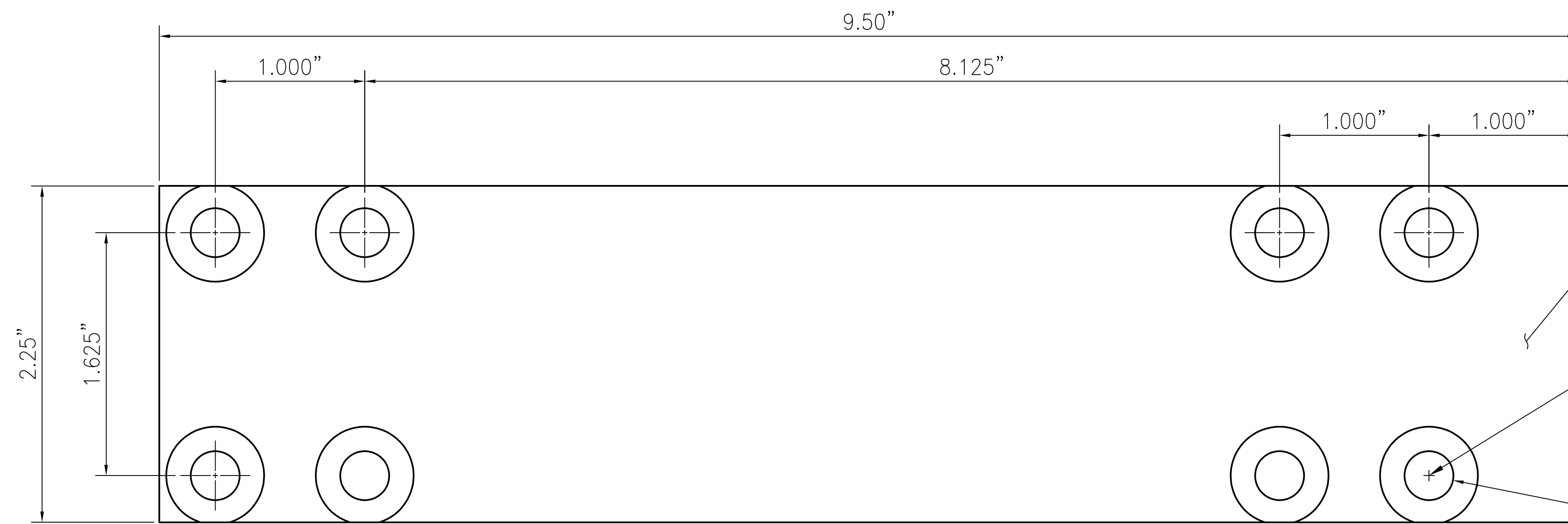
DESIGNED BY	R.McLANE
DRAWN BY	J.JONASEN
CHECKED BY	-
IN CHARGE	-
DATE	11.18.2025



BORAID AUTOMATION  
 3050 E. AIRPORT WAY  
 LONG BEACH, CA 90806  
 562.264.2500

TBM GROUT SYSTEM MIXING BOX  
 MIXING CHAMBER  
 -  
 ENTRY AND EXIT DETAILS  
 -  
 -

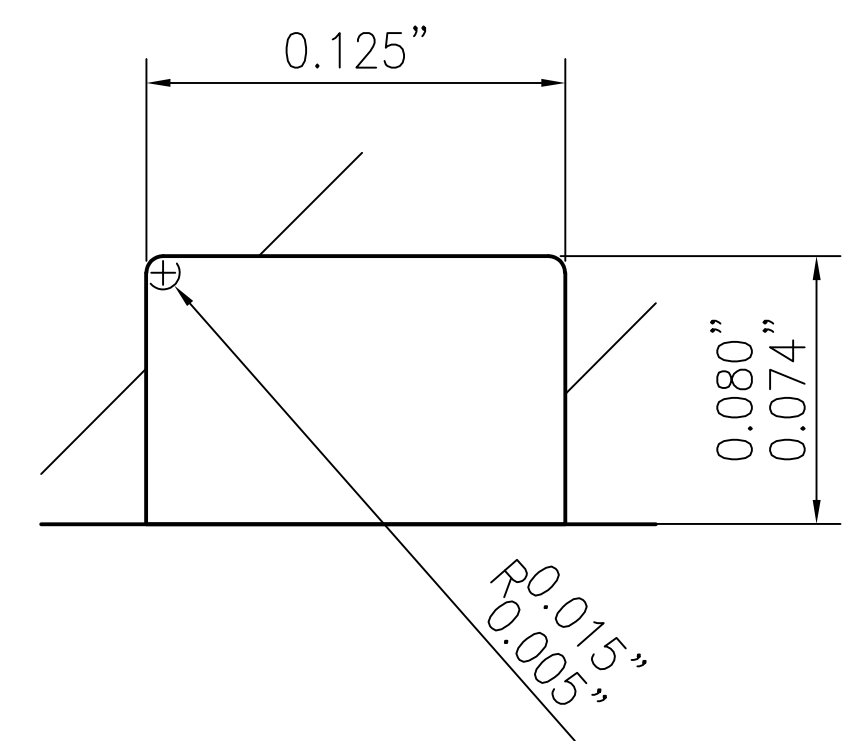
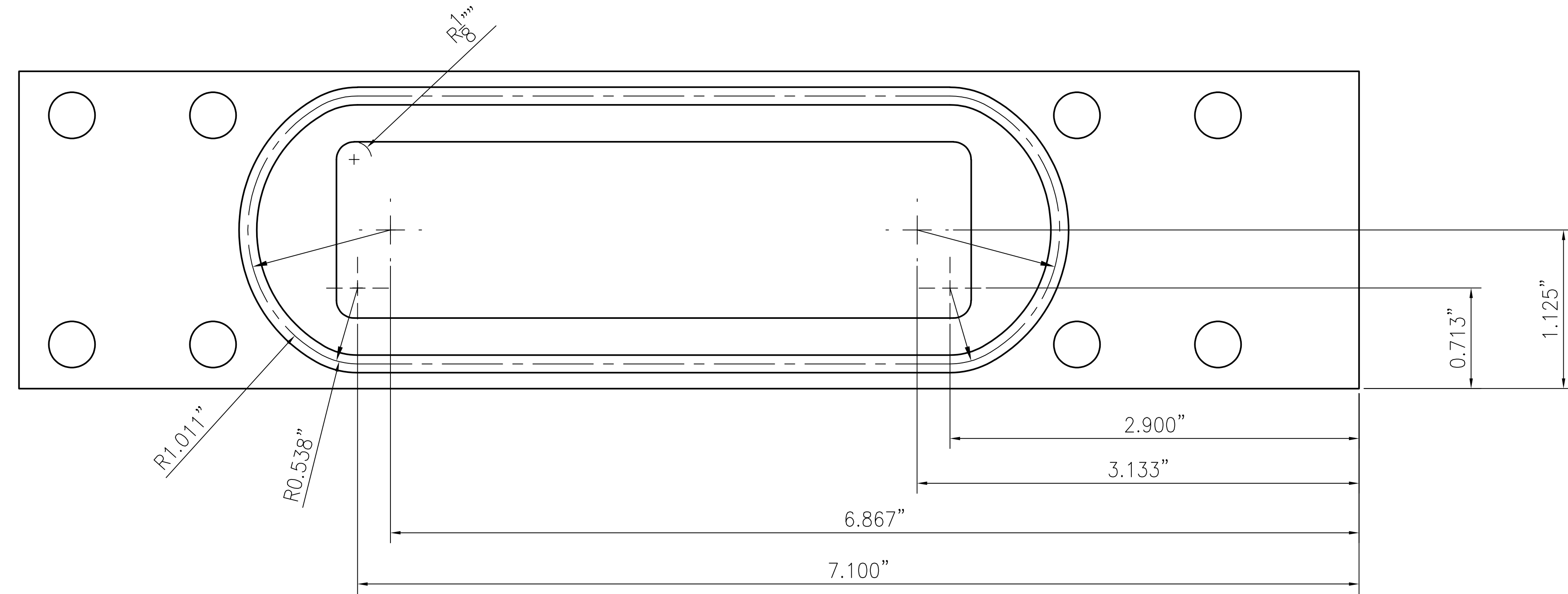
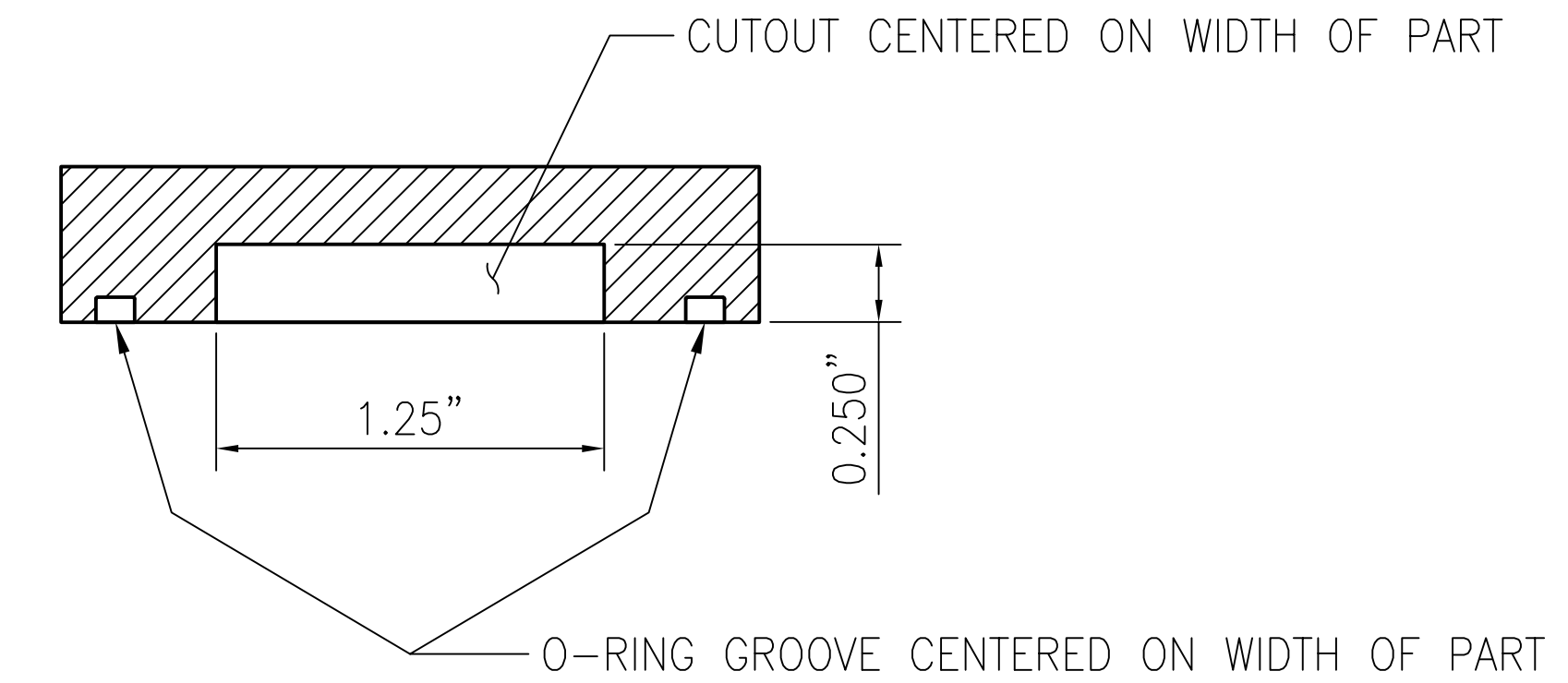
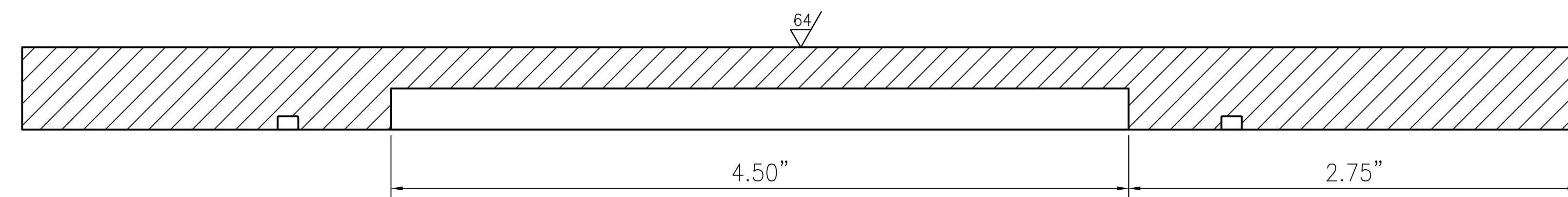
CATALOG NO	2025-1511-MK01-00
DRAWING NO	2025-1511
SCALE	-
SHEET NO	03



1/2" THICK PLATE

(8) HOLES SYMMETRIC ABOUT WIDTH OF PART DRILLED THRU AND COUNTERSINK FOR 5/16" FLAT HEAD SCREWS

$\frac{21}{64}$ "



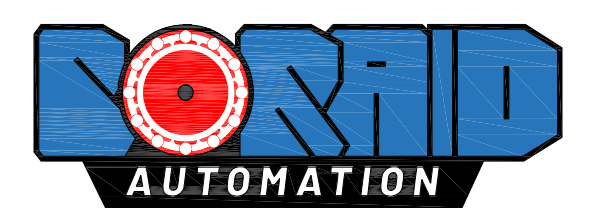
1 O-RING GROOVE DETAIL  
04

- NOTES:
1. MATERIAL IS ASTM A-514
  2. TOLERANCES:
    - 2.1. X.XX +/- 0.030"
    - 2.2. X.XXX +/- 0.005"
  3. O-RING GROOVE SURFACE FINISH 63μINCH

FILE NAME: 2025-1511-00 TBM GROUT SYSTEM MIXING BOX.DWG; PRINT DATE: 11/19/2025

REV	DATE	BY	APP	DESCRIPTION

DESIGNED BY	R.McLANE
DRAWN BY	J.JONASEN
CHECKED BY	-
IN CHARGE	-
DATE	11.18.2025

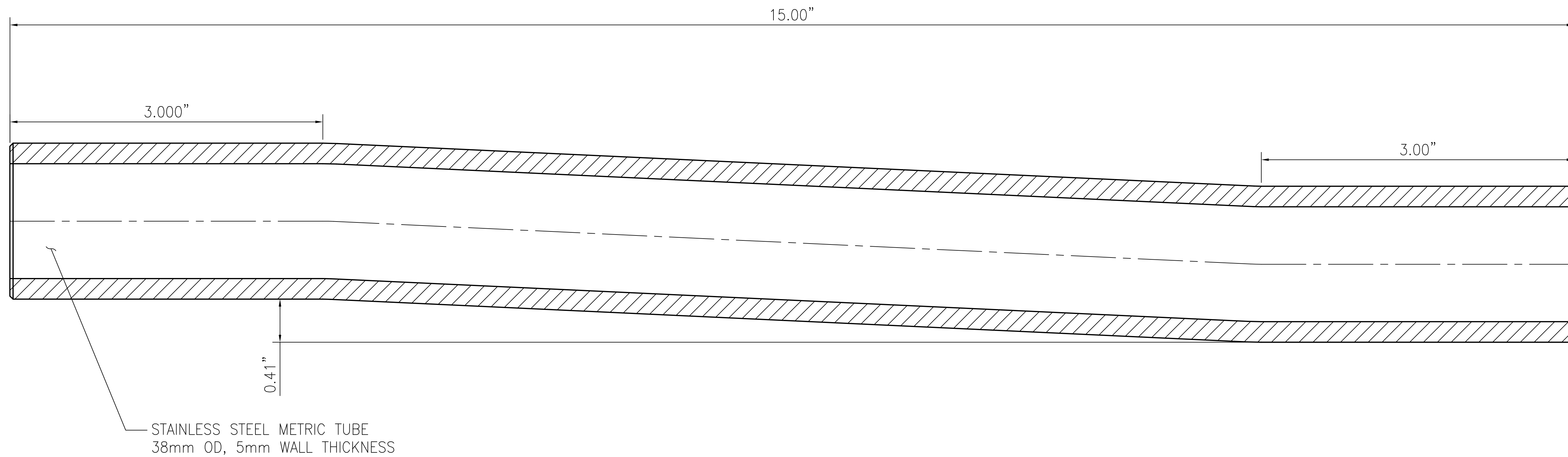


BOROID AUTOMATION  
3050 E. AIRPORT WAY  
LONG BEACH, CA 90806  
562.264.2500

TBM GROUT SYSTEM MIXING BOX
LID
-
-
-

CATALOG NO	2025-1511-MK02-00		
DRAWING NO	2025-1511	REV	-
SCALE	-		
SHEET NO	04		

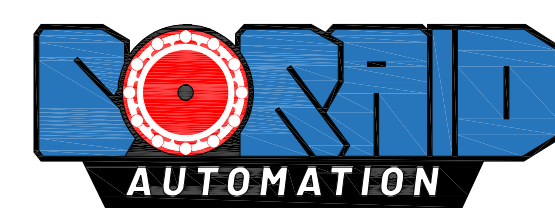
FILE NAME: 2025-1511-00 TBM GROUT SYSTEM MIXING BOX.DWG; PRINT DATE: 11/19/2025



- NOTES:**
1. METRIC TUBE MAY BE SUBSTITUTED FOR:
    - 1.1. 1.50" OD STAINLESS TUBING, 0.188" WALL THICKNESS
  2. TOLERANCES:
    - 2.1. X.XX +/- 0.030"
    - 2.2. X.XXX +/- 0.005"

REV	DATE	BY	APP	DESCRIPTION

DESIGNED BY	R.McLANE
DRAWN BY	J.JONASEN
CHECKED BY	-
IN CHARGE	-
DATE	11.19.2025



BOROID AUTOMATION  
3050 E. AIRPORT WAY  
LONG BEACH, CA 90806  
562.264.2500

TBM GROUT SYSTEM MIXING BOX  
OFFSET PIPE

-

-

-

CATALOG NO	2025-1511-MK03-00	
DRAWING NO	2025-1511	REV -
SCALE	-	
SHEET NO	05	